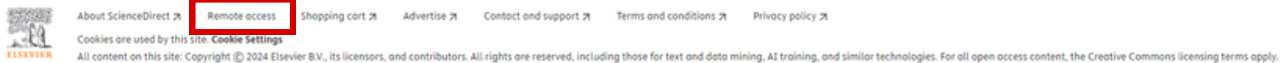


ACTIVATE REMOTE ACCESS

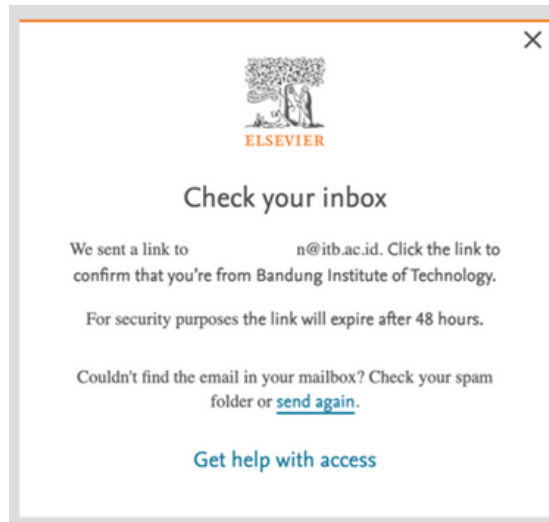
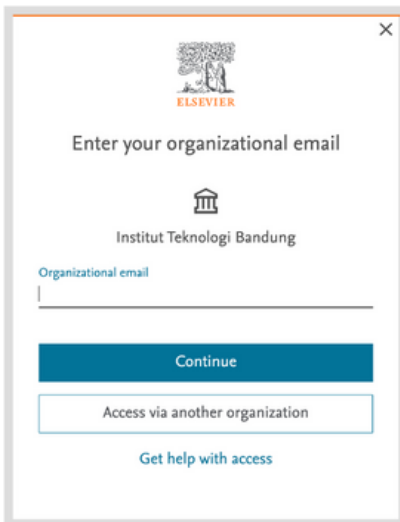
Remote access activation involves two elements: Activate your remote access and Create a user profile.

Activate your remote access.

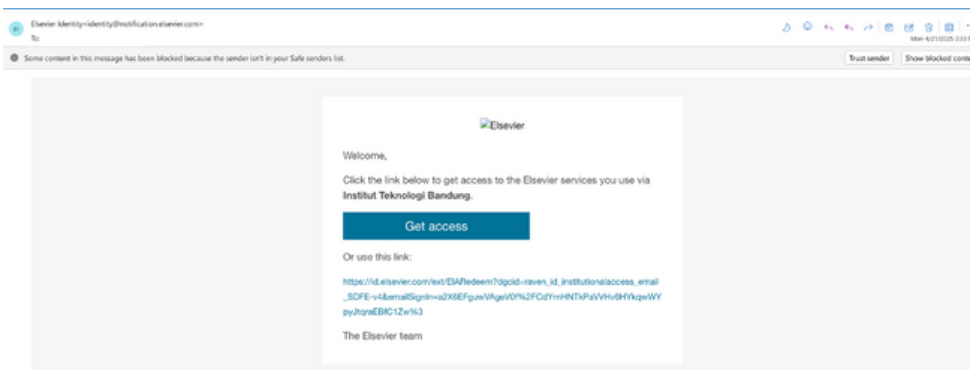
1. Open the ScienceDirect website www.sciencedirect.com
2. Scroll to the bottom of the page and click on Remote access.



3. Enter your company e-mail address and click on Continue. A confirmation email will be sent.



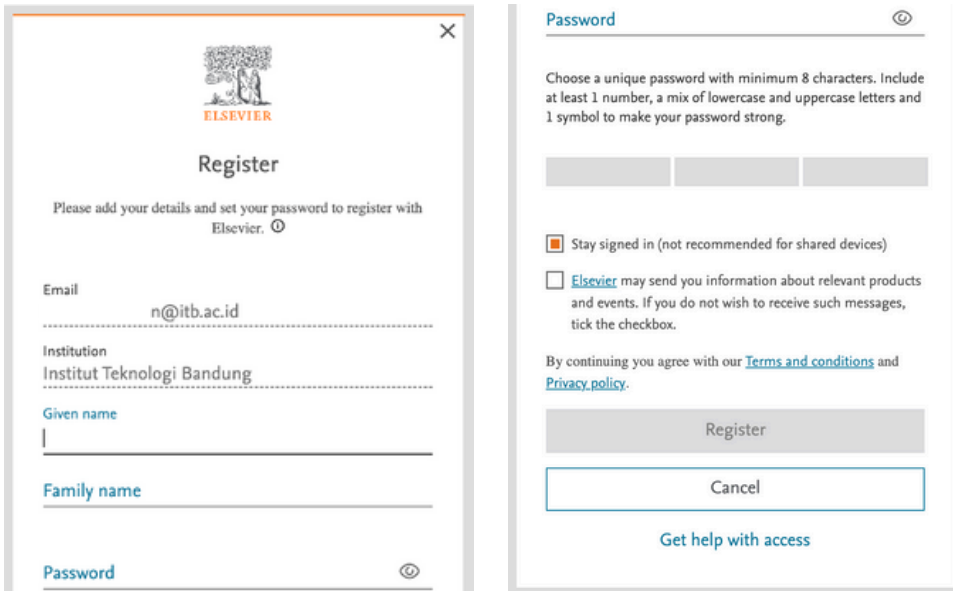
4. Open the email and click the link to Activate your remote access.



5. Click Sign in (top right) for Register.



6. Enter details required in the registration form and then click Register.



7. And you are done. You can now access Science Direct from any device from anywhere.

8. Just open your browser, go to www.sciencedirect.com and Sign in with your e-mail address and password.

